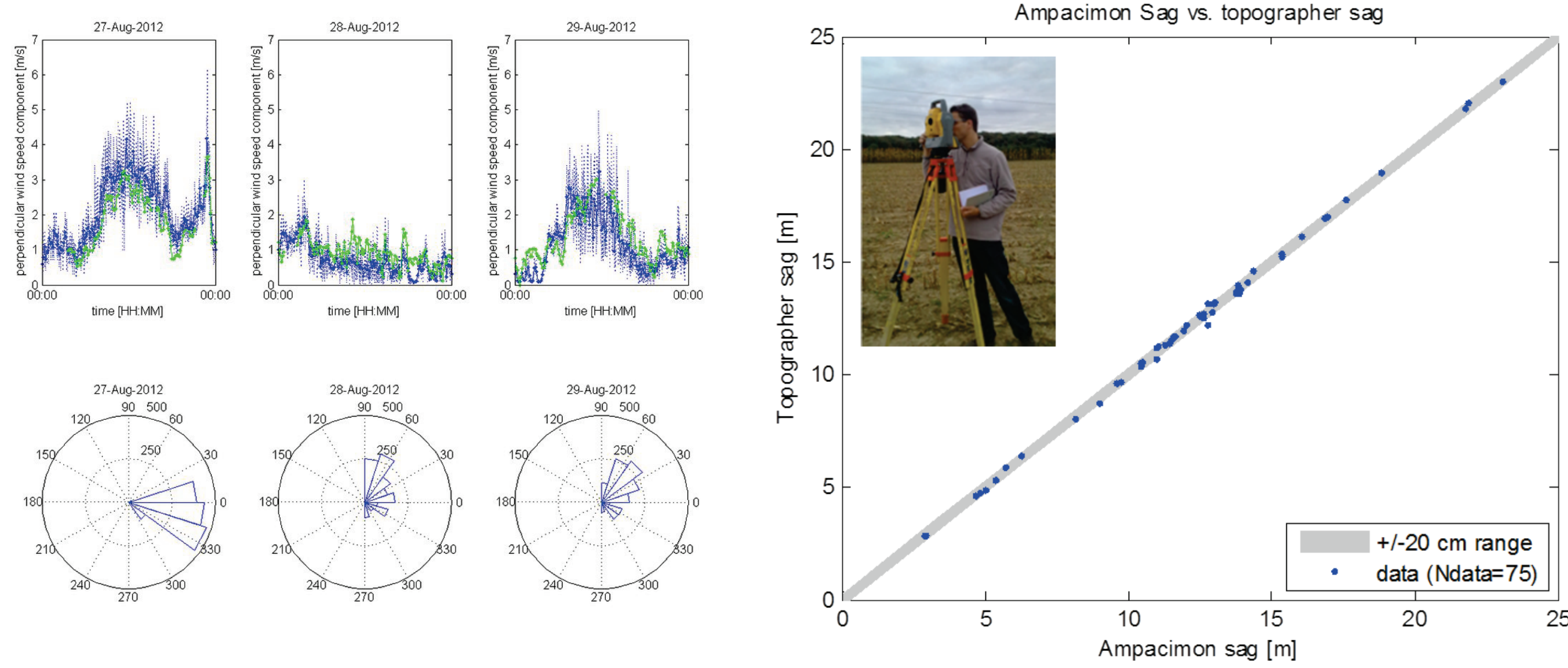


A new monitoring tool to increase network transfer capacity with existing assets

H.-M. NGUYEN, F. VASSORT, J.-L. LILIEN (BELGIUM)

Dynamic Line Rating

“How to optimise existing assets while enforcing safety rules”



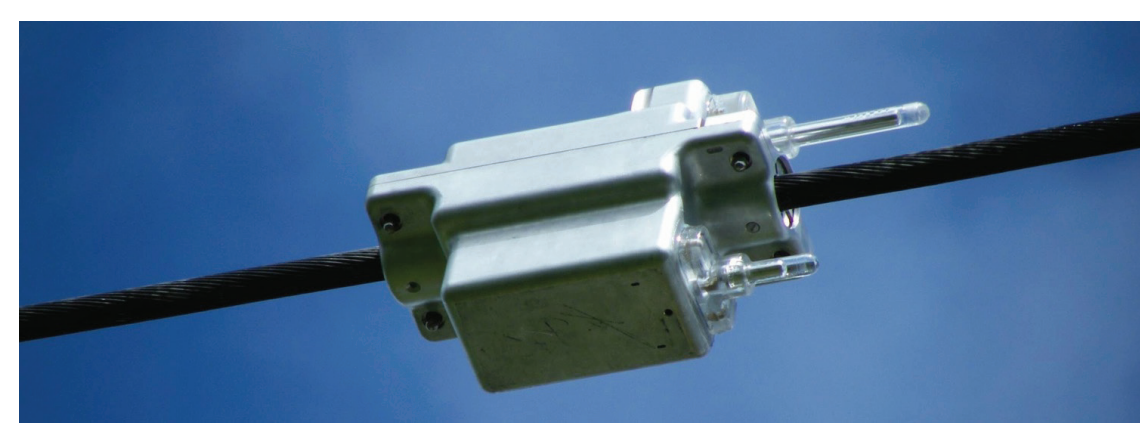
Context and external factors

Congestions, N-1 contingencies
RES integration
Interconnectors

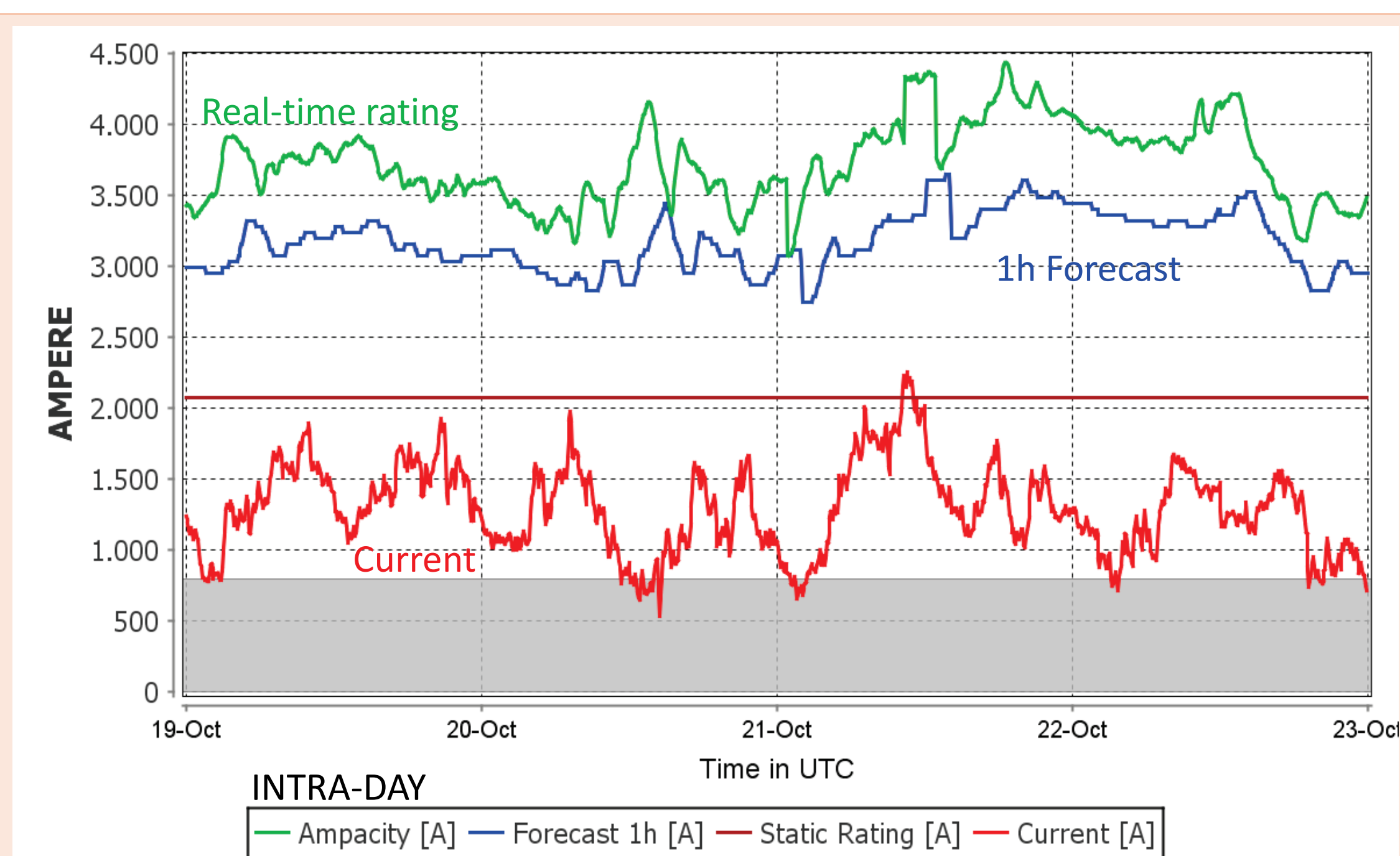
Budget constraints,
Delays, Permit issues,
OHL Nimby, ...

Integration into utility's workflow

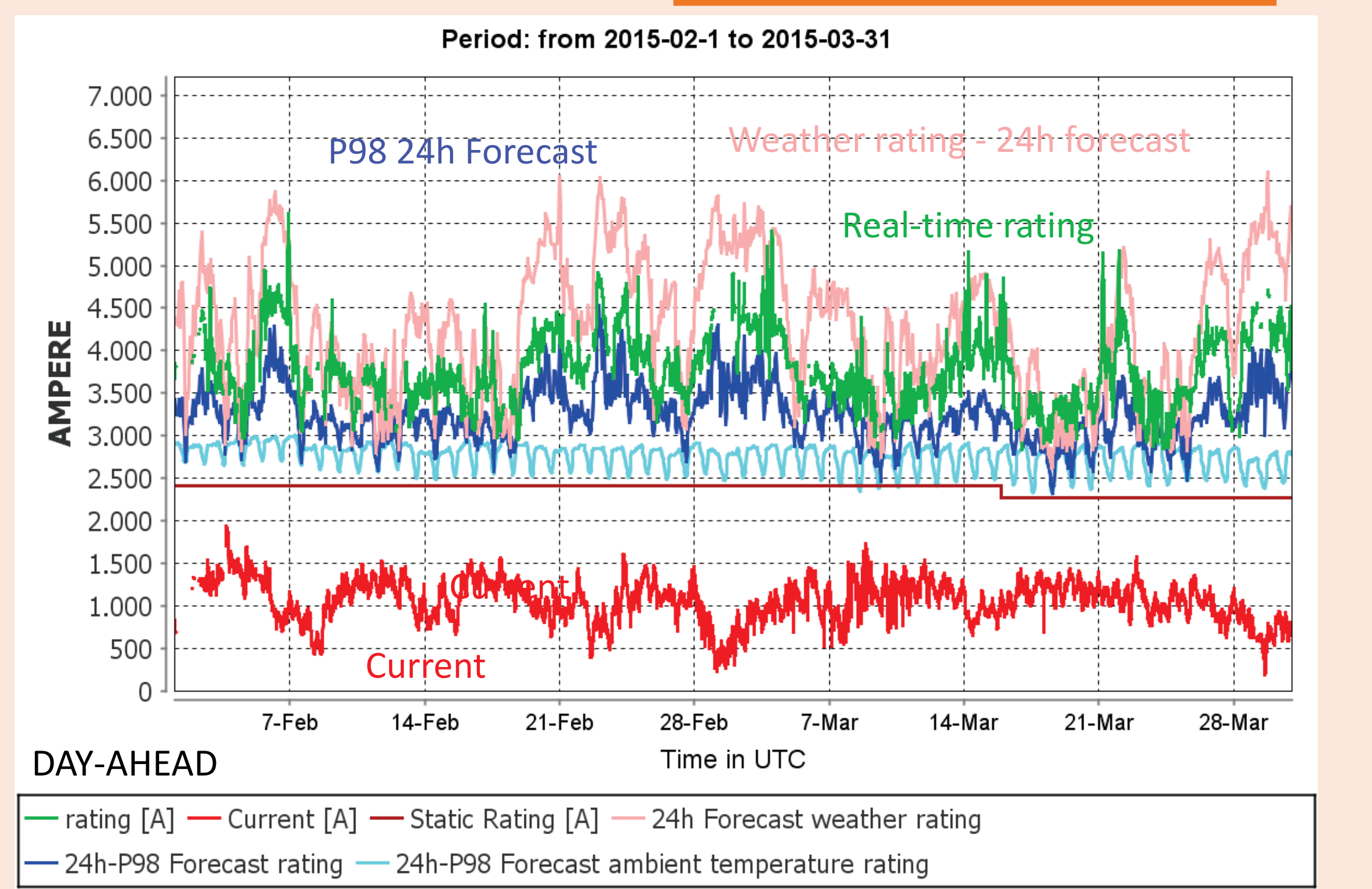
Deployment on grid
Stand-alone operation
Scada integration
Real-time operation



Rationale for deployment



Forecasting



Safety
Regulations
Where / When / What for

Controllable Assets
Efficiency
Rules



Benefit / Cost assessment

- Benefits expected
- Costs / Lead time / ROI
- Other innovations

Set of criteria

- Use cases
- Priorities / stakes
- Benefits expected
- Planning

Processes

- Incorporation in line design
- Installation
- Training
- Operation / Options / Use of data